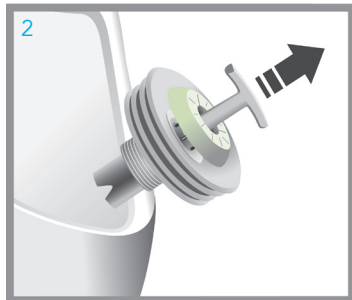


Changing the Key-Adapter®



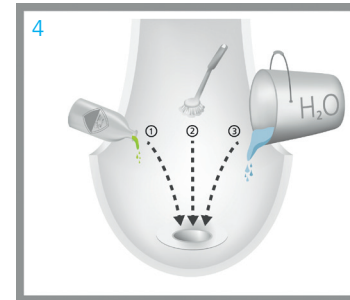
1 Flush the High Performance Key-Valve® (HPKV) thoroughly with water.



2 Using the Service-Key, remove the HPKV and the Key-Adapter together (do not unscrew the valve separately).



3 Dispose the HPKV and the Key-Adapter as normal waste.



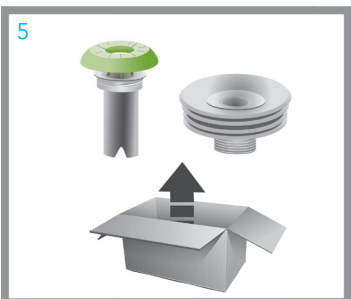
4 Flush with a bucket of water containing cleaner.

- 1) Use concentrated acid cleaner.
- 2) Scrub thoroughly, using a brush.
- 3) Flush with a bucket of water containing cleaner.

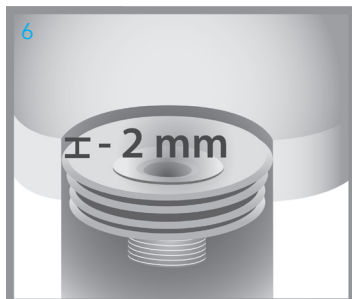
The Key-Adapter should be changed every 1 to 2 years in accordance with its optical appearance. At this time, inspection and cleaning of the drainpipe is recommended.

* Use a mild surfactant based and pH neutral cleaner (0 – 15 % anionic and/or non ionic surfactants). Uncritical additives are enzymes, perfume, oils, dyes, inhibitors, etc.

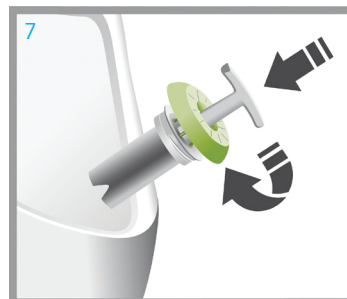
CAUTION: No use of harsh cleaner as for instance chlorine or bleaches as well as no solvent based cleaning agents. No use of acids or alkalines.



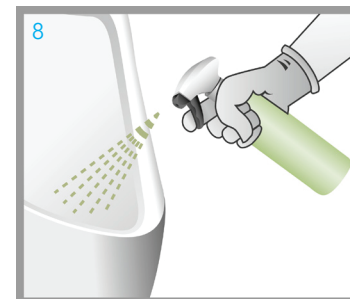
5 Take a new Key-Adapter and HPKV out of the packaging.



6 Place the new Key-Adapter in the drain opening and press it in until it fits properly in the urinal opening.



7 Using the Service-Key, screw the HPKV in clockwise into the Key-Adapter until the valve sits evenly.



8 Activate the new HPKV by flushing about 5 litres of soapy water. Spray urinal with pH neutral cleaner*. Do not wipe afterwards.

Adapter SET

Article numbers

- 200 000 - Adapter SET Ernst-Becken
- 201 000 - Adapter SET Ernst-Rinnen
- 203 000 - Adapter SET Geberit
- 204 000 - Adapter SET Hellbrok
- 205 000 - Adapter SET Uridan
- 206 000 - Adapter SET Urimat